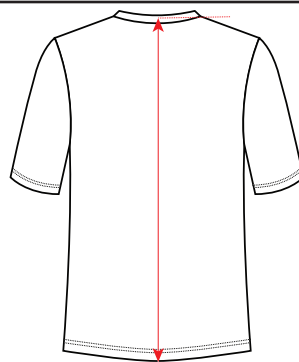
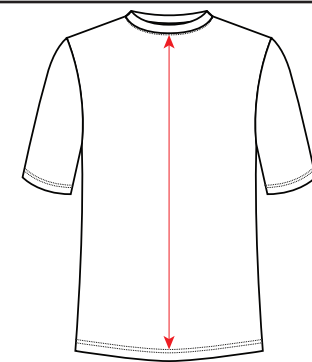


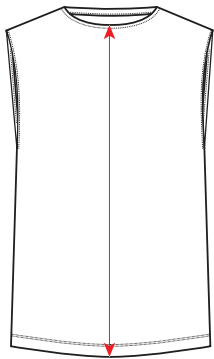
1. Front Length from HPS-
Measure center front of garment
beginning at HPS straight down to sweep



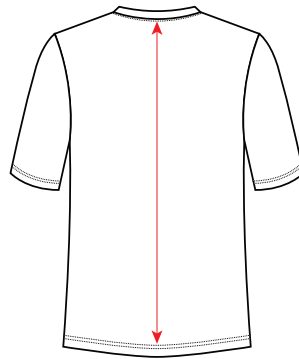
2. Back Length from HPS-
Measure center back of garment
beginning at HPS straight down to sweep



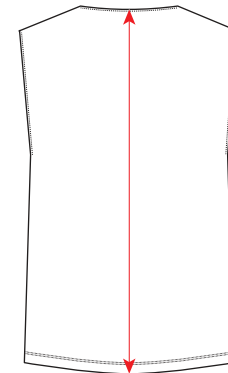
3. Center Front Length from Seam-
Measure center front of garment from
seam to seam



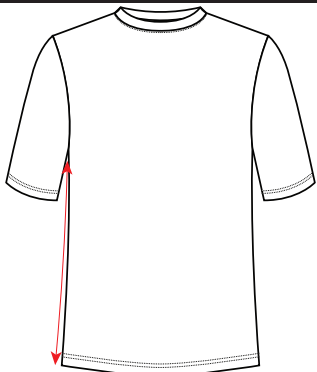
4. Center Front Length from Edge-
Measure center front of garment from
edge to edge



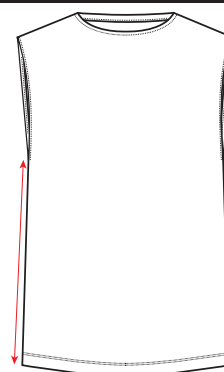
5. Center Back Length from Seam-
Measure center back of garment
from seam to seam



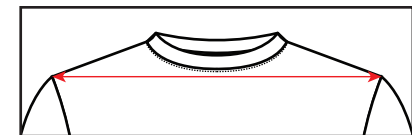
6. Center Back Length from Edge-
Measure center back of garment from
edge to edge



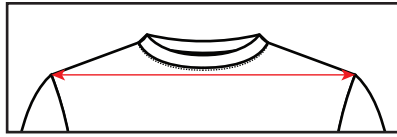
7. Side Length from Seam-
Measure side of garment starting at bottom of
armhole/side seam to edge at bottom of garment



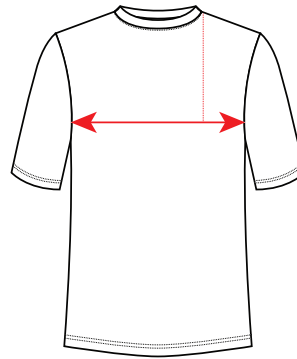
8. Side Length from Edge-
Measure side of garment starting at bottom
of armhole/side seam to bottom hem of garment



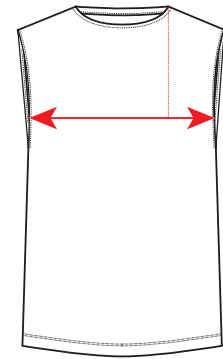
9. Across Shoulder Width (Seam to Seam)-
Measure straight across front of garment
starting at armhole seam to armhole seam



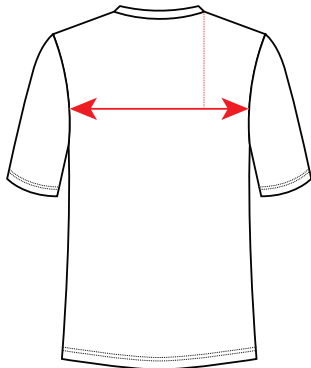
10. Across Shoulder Width (Edge to Edge)-
Measure straight across front of garment starting at armhole edge to armhole edge



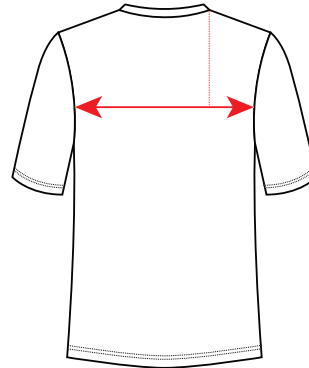
11. Across Front Width (Seam to Seam)-
Measure front of garent 6 inches below HPS straight across from seam to seam



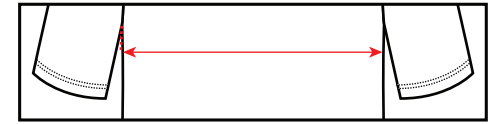
12. Across Front Width (Edge to Edge)-
Measure front of garent 6 inches below HPS straight across from edge to edge



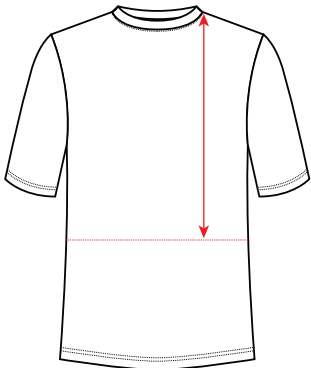
13. Across Back Width 6" from HPS (Seam to Seam)-
Measure back of garment 6" below HPS straight across from seam to seam



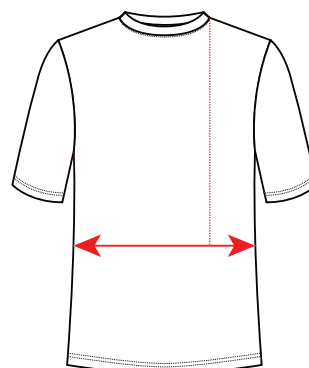
14. Across Back Width 6" from HPS (Edge to Edge)-
Measure back of garment 6" below HPS straight across from edge to edge



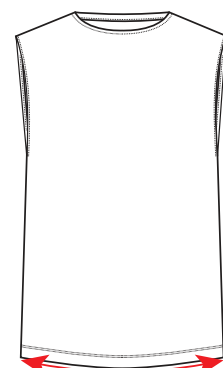
15. Chest Width 1" below Armhole-
Measure on front of garment 1" inch below armhole straight across from edge



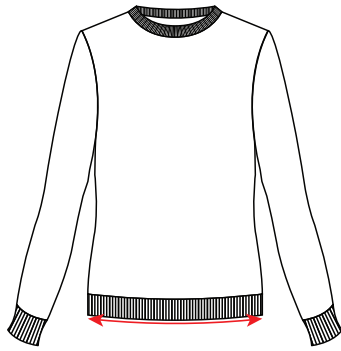
16. Waist Placement from HPS-
Measure front of garment 12" below HPS straight across from edge to edge



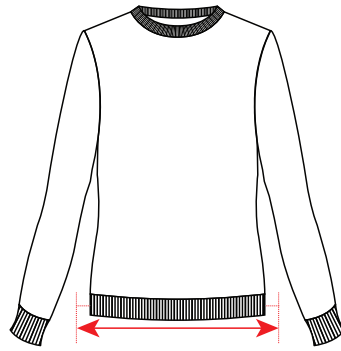
17. Waist Width-
Measure front of garment straight across from edge to edge at the narrowest point



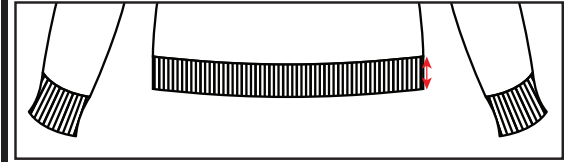
18. Bottom Opening Width-
Measure from the side edge of bottom hem to side edge of bottom hem following natural contour of hem



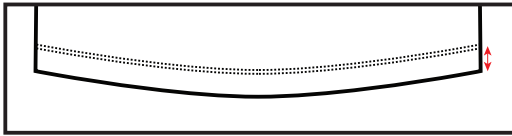
19. Bottom Opening Width Relaxed-
Measure from the side edge of bottom band to side edge of bottom band following natural contour of hem



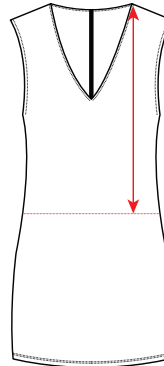
20. Bottom Opening Width Extended-
Measure from the side edge of bottom band to side edge of bottom band in a fully extended position



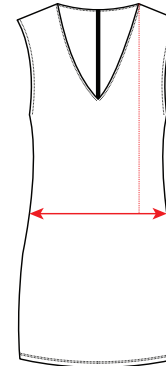
21. Bottom Band Height-
Measure from band joining seam of bottom band straight down to bottom edge



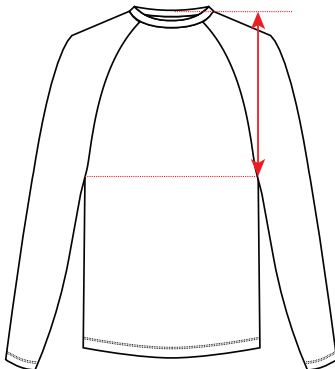
22. Bottom Opening Hem Height-
Measure from hem of garment straight down to bottom edge of garment



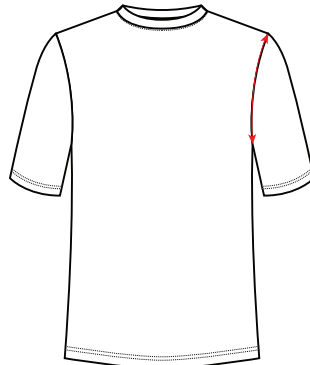
23. High Hip Placement from HPS-
Measure on front of garment from HPS straight down to high hip placement



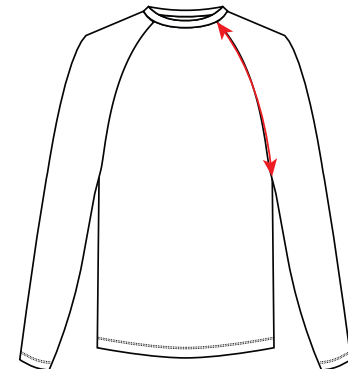
24. High Hip Width-
Measure front of garment from edge of high hip placement straight across to edge of high hip placement



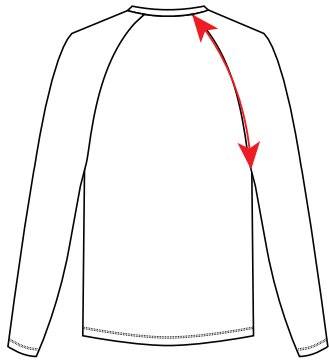
25. Armhole Drop from HPS-
Measure from HPS straight down to bottom of armhole.



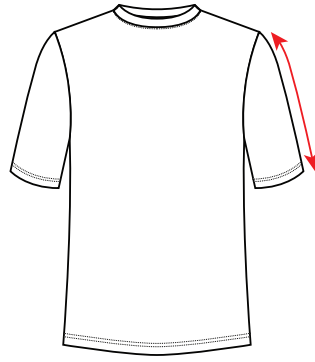
26. Armhole Depth Curved-
Start at top of armhole and follow seam to bottom of armhole.



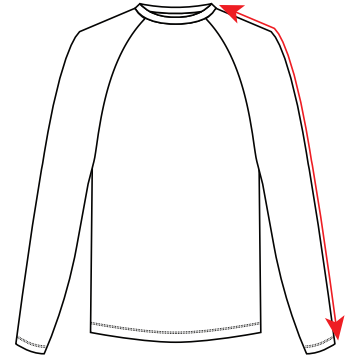
27. Raglan Armhole Front-
Measure from front binding seam and follow armhole to bottom of armhole seam.



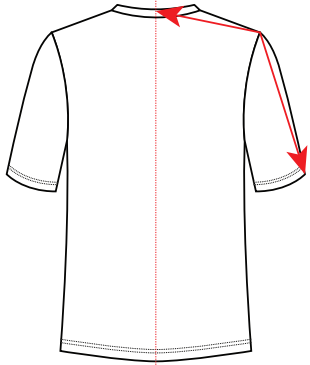
28. Raglan Armhole Back-
Measure from back binding seam around
armhole to bottom of armhole seam



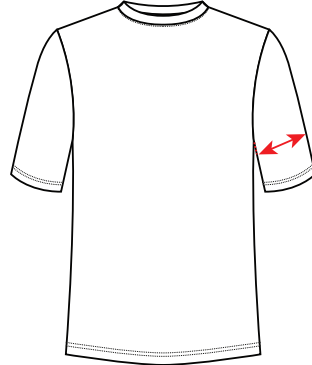
29. Sleeve Length from Top of Armhole-
Measure from shoulder seam to
sleeve opening edge



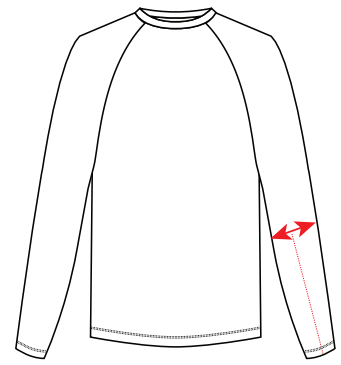
30. Sleeve from HPS-
Measure from HPS to end of sleeve
opening edge



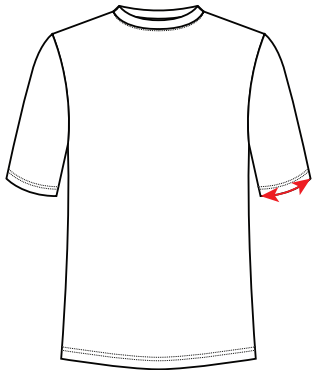
31. Sleeve length from CB-
Measure from center back seam
to sleeve opening edge



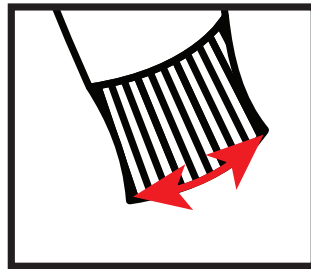
32. Muscle Width- 1" below armhole-
Measure 1" under armhole and
across.



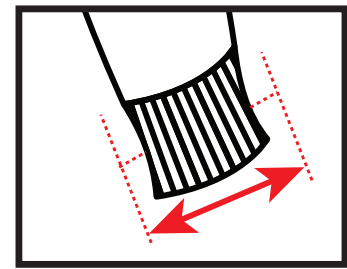
33. Elbow Width- 6" from sleeve opening-
Measure 6" from sleeve opening then
across from edge to edge, parallel to sleeve opening



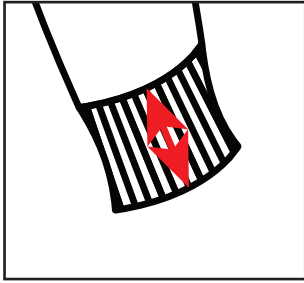
34. Sleeve Opening Width-
Measure the opening of sleeve
from edge to edge



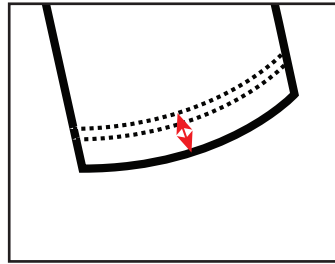
35. Sleeve Opening Relaxed Width-
Measure the opening of sleeve relaxed
from edge to edge



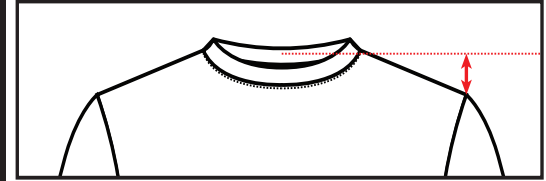
36. Sleeve Opening Extended Width-
Measure the opening of sleeve edge to
edge pulled to extend opening



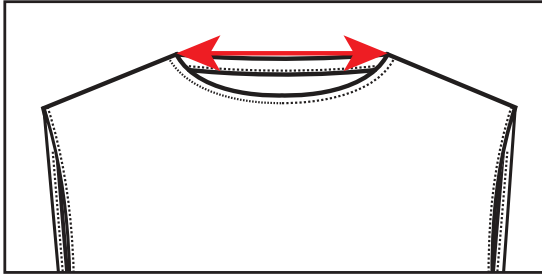
37. Cuff Height-
Measure from opening edge to seam



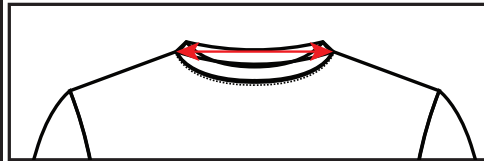
38. Sleeve Opening Hem Height-
Measure from top stitching straight
down to bottom edge to edge.



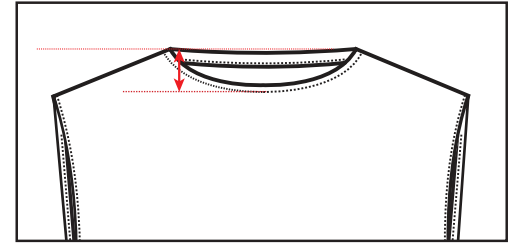
39. Shoulder Slope-
Measure from HPS straight to shoulder



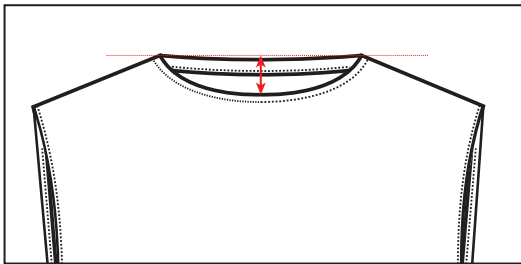
40. Neck Width (Edge to Edge)-
Measure edge to edge on neck



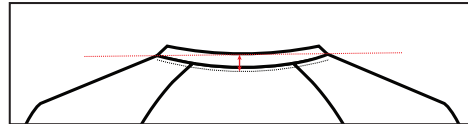
41. Neck Width Seam to Seam-
Measure seam to seam on neck



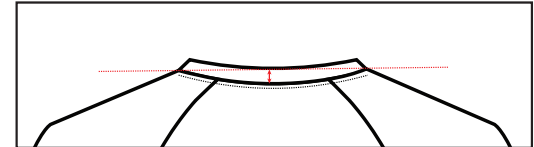
42. Front neck drop (HPS to Seam)-
Measure length from HPS to bottom
neck seam



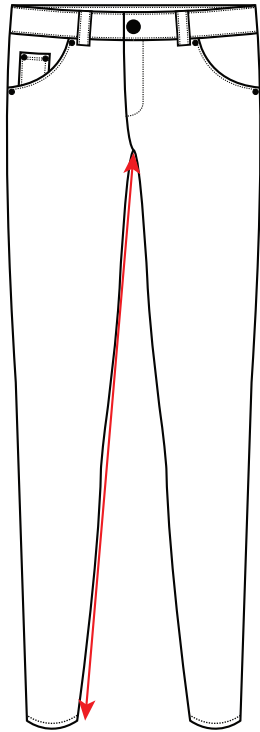
43. Front neck drop from HPS (Edge to Edge)-
Measure from HPS to edge of neck



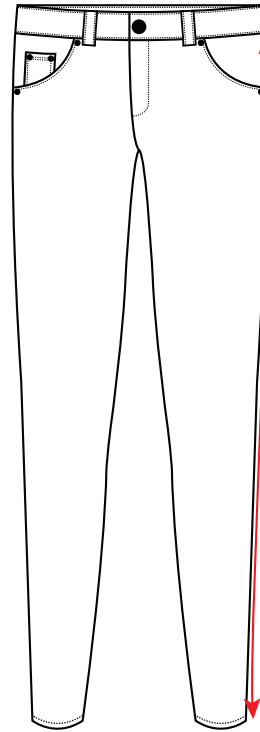
44. Back neck drop (HPS to Seam)-
Measure from HPS to neck seam



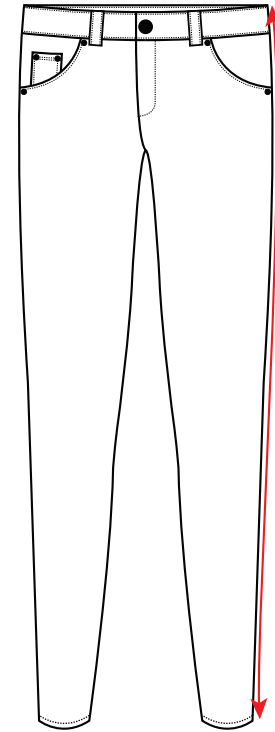
45. Back Neck Drop (HPS to Edge)-
Measure from HPS to the edge
of neck



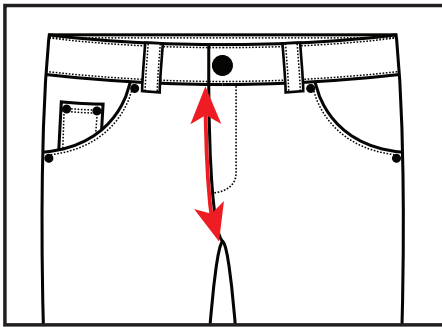
1. Inseam- On front of garment measure from crotch to leg opening edge along inseam



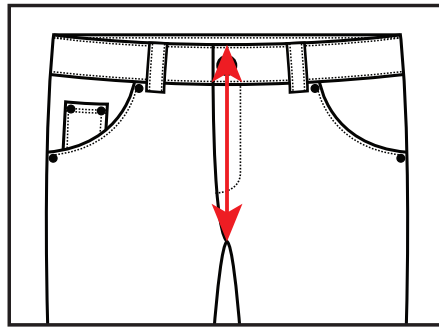
2. Outseam below Waistband- On front of garment measure from bottom edge of waistband to edge of leg opening alongside the outseam



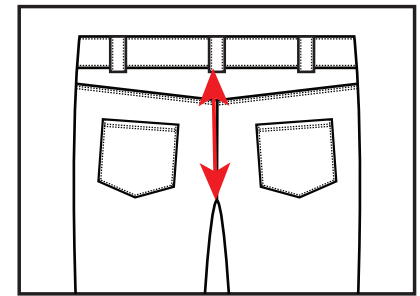
3. Outseam including Waistband- On front of garment measure from top edge of waistband to edge of leg opening alongside the outseam



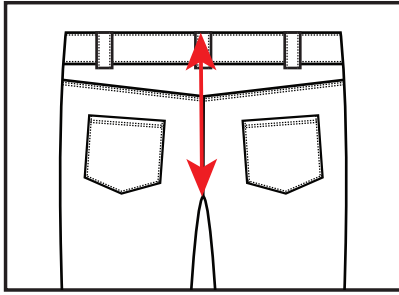
4. Front Rise below Waistband- On front of garment measure from bottom edge of waistband to crotch seam



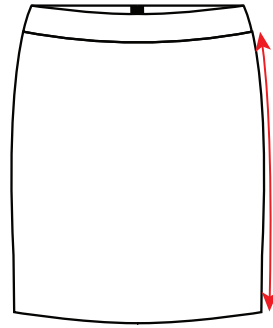
5. Front Rise including Waistband- On front of garment measure from top edge of waistband to crotch seam



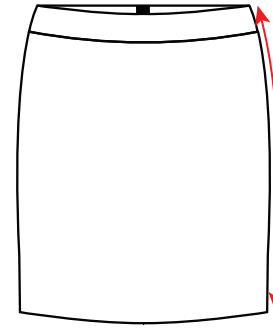
6. Back Rise below Waistband- On back of garment measure from bottom edge of waistband to crotch seam



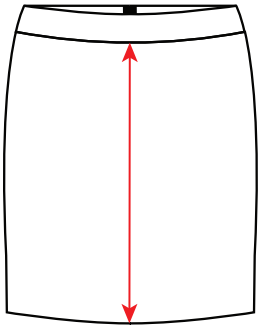
7. Back Rise including Waistband-
On back of garment measure from top edge
of waistband to crotch seam



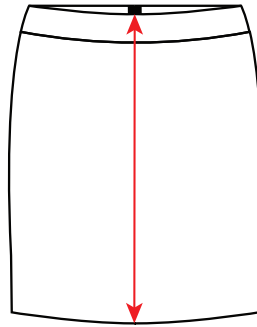
8. Side Length below Waistband- On front of
garment measure from bottom edge of waistband
to edge of leg opening alongside outseam



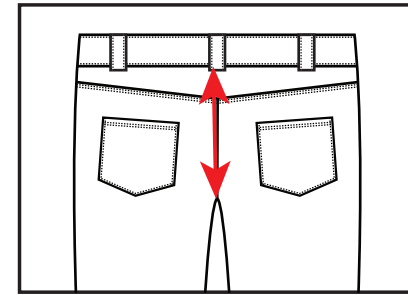
9. Side Length including Waistband-
On front of garment measure from top edge of
waistband to edge of leg opening alongside outseam



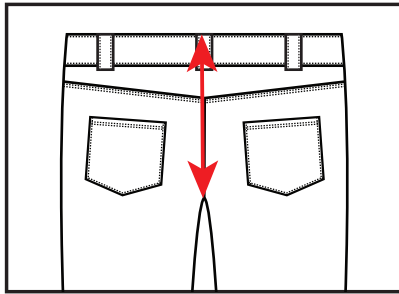
10. Center Front Length below Waistband- On
front of garment measure from bottom edge
of waistband straight down to crotch seam



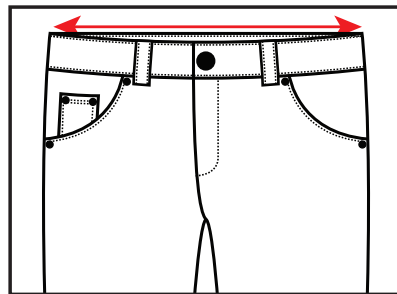
11. Center Front Length including
Waistband- On front of garment measure from top
edge of waistband straight down to crotch seam



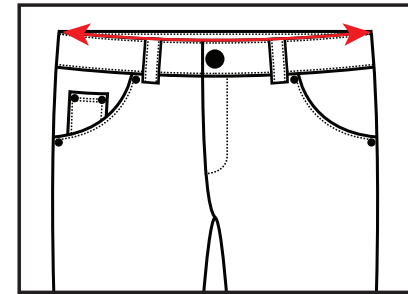
12. Center Back Length below
Waistband- On back of garment measure from
bottom edge of waistband to crotch seam



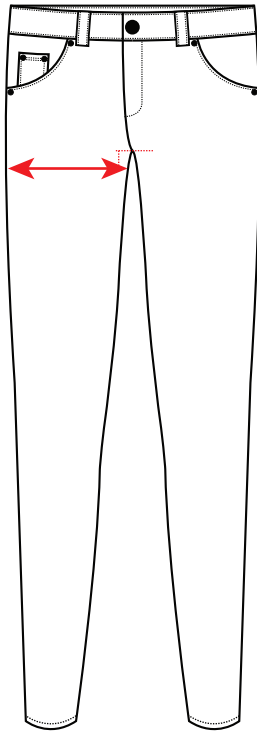
13. Center Back Length including
Waistband- On back of garment measure
from top edge of waistband to crotch seam



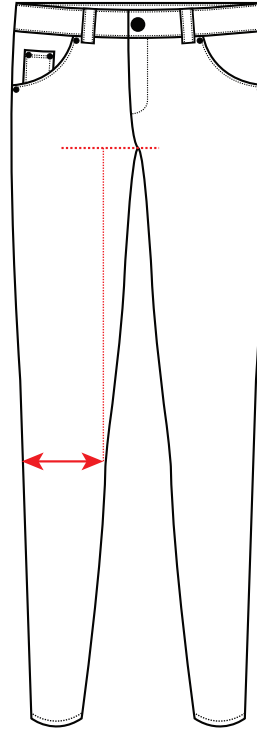
14. Waistband Width at Top
Waistband- On front of garment measure top fold
edge of waistband across to top fold edge



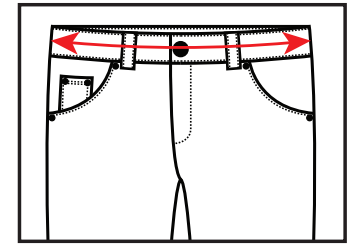
15. Waistband Width at Bottom
Waistband- On front of garment measure bottom fold
edge of waistband across to bottom fold edge



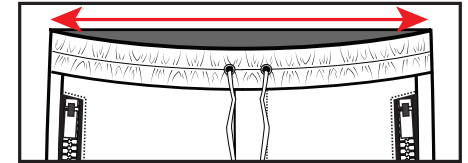
21. Thigh Width 1" below Crotch- On front of garment measure straight across from edge to edge 1" below crotch



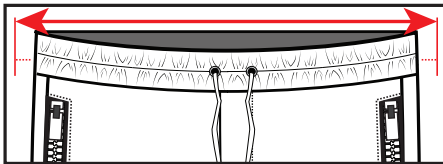
22. Knee Width 12" below Crotch- On front of garment measure straight across from edge to edge 12" below crotch



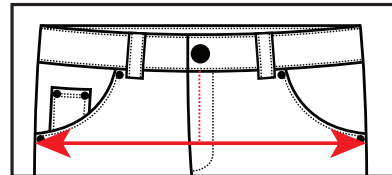
16. Waistband Width at Center Waistband- On front of garment measure center fold edge of waistband across to center fold edge.



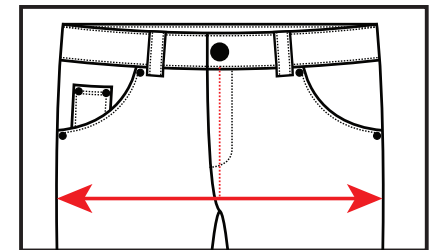
17. Waistband width Relaxed- Measure relaxed waistband from top edge straight across to top edge



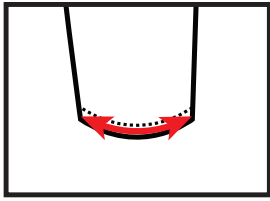
18. Waistband Width Extended- Measure extended waistband from top edge straight across to top edge



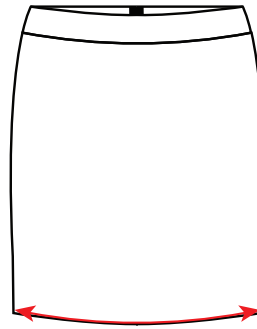
19. High Hip Width 2" below Waistband- On front of garment measure straight across from edge to edge 2" below waistband



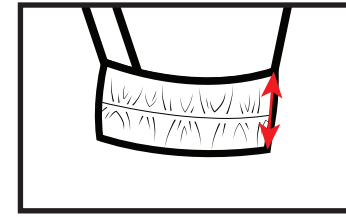
20. Low Hip Width 4" below Waistband- On front of garment measure straight across from edge to edge 4" below edge of waistband



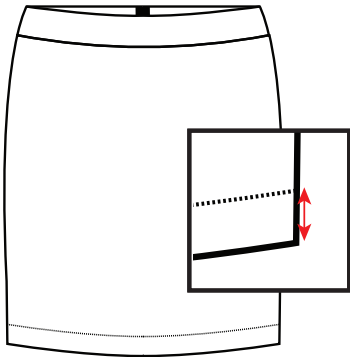
23. Leg opening width- On front of garment measure straight across from edge to edge at bottom of leg opening



26. Sweep Width- On front of garment measure straight across from edge to edge alongside the bottom hem



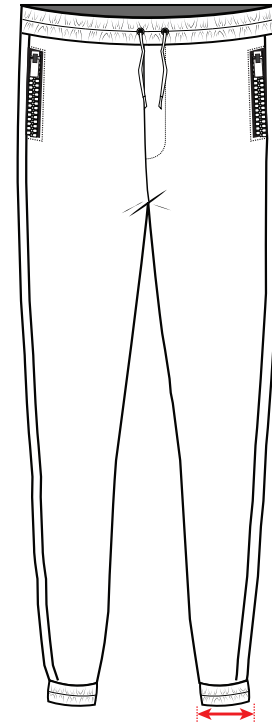
27. Leg Opening Cuff Height- On leg opening cuff measure from top edge straight down to bottom edge



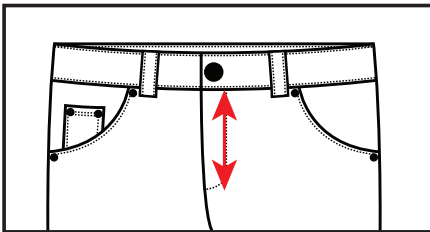
28. Opening Hem Height- On leg opening hem measure from seam straight down to bottom edge



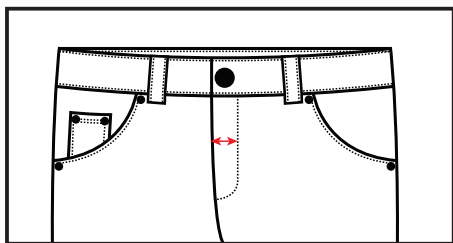
24. Leg Opening Width Relaxed- On front of garment measure straight across from edge to edge at bottom of relaxed leg opening



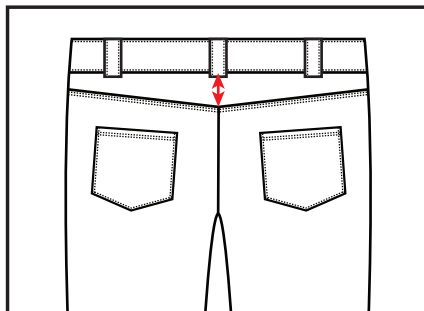
25. Leg Opening Width Extended- On front of garment measure straight across from edge to edge at bottom of extended leg opening



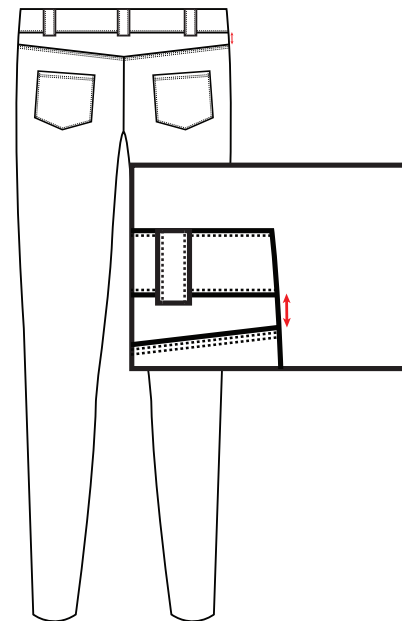
29. J-Stitch/Fly Height- On front of garment measure from bottom edge of waistband straight down to outer fly topstitch



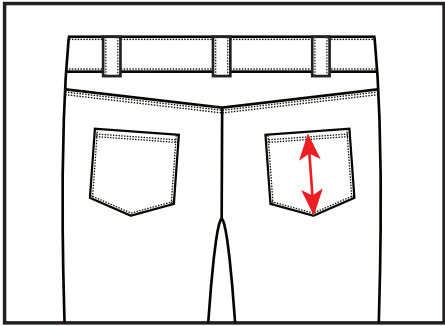
30. J-Stitch/Fly Width- On front of garment measure from edge of fly straight across to outer fly topstitch



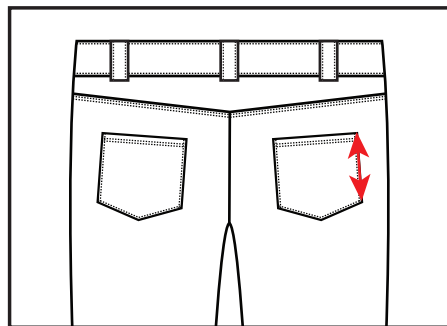
31. Back Yoke Depth at Center Back- On center back of garment measure from bottom edge of waistband straight down to yoke edge



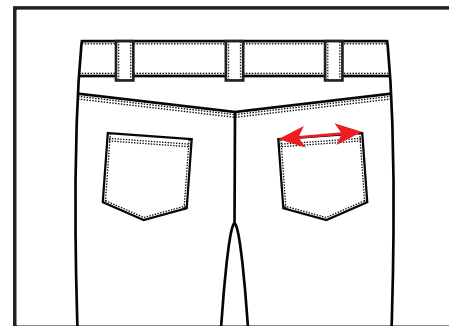
32. Back Yoke Depth at Outseam- On back of garment measure from bottom edge of waistband at outseam straight down to yoke edge



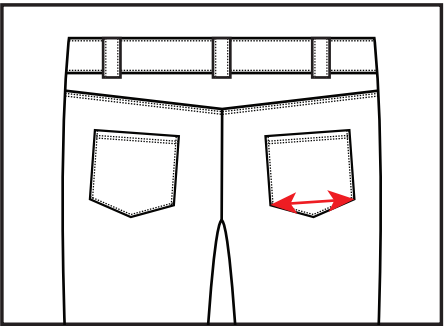
1. Patch Pocket Height at Center-
Measure center of pocket straight
down from edge to edge



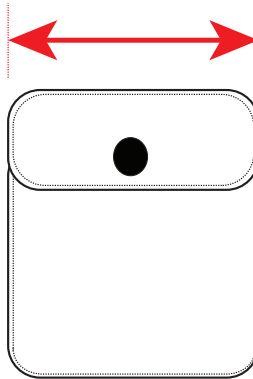
2. Patch Pocket Height at Side-
Measure side of pocket straight
down from edge to edge



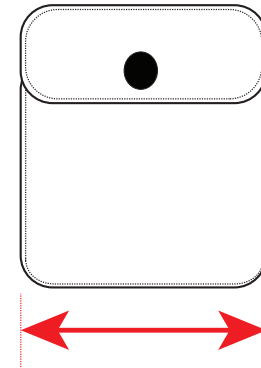
3. Patch Pocket Width at Top-
Measure top of pocket straight
from edge to edge



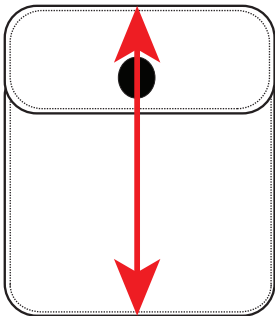
4. Patch Pocket Width at Bottom-
Measure bottom of pocket straight
across from edge to edge



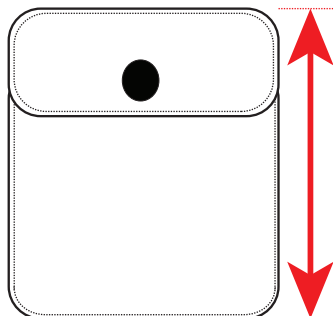
5. Pocket Flap Width at Top-
Measure top of pocket straight
across from edge to edge



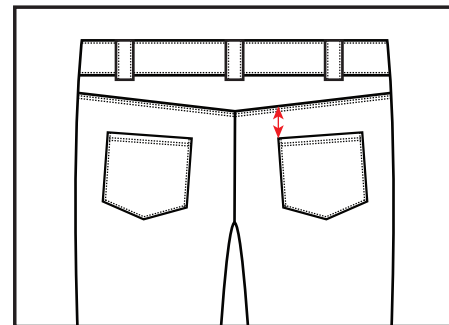
6. Pocket Flap Width at Bottom-
Measure bottom of pocket straight
across from edge to edge



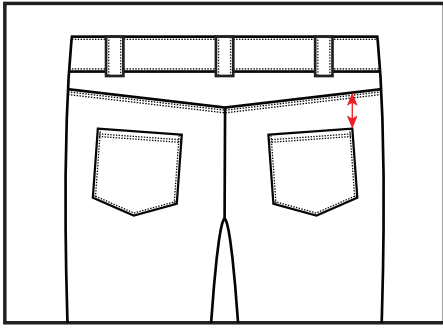
7. Pocket Flap Height at Center-
Measure center of pocket from top
edge straight down to bottom edge



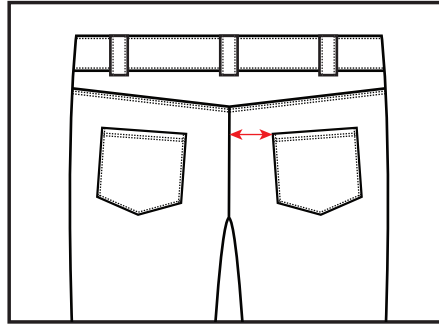
8. Pocket Flap Height at Side-
Measure side of pocket from top
edge straight down to bottom edge



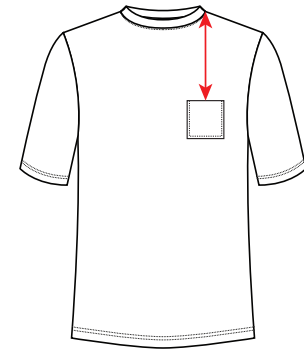
9. Back Pocket Placement from Yoke (closest corner to
Center Back)- Measure back pocket from edge of yoke
straight down to edge of pocket



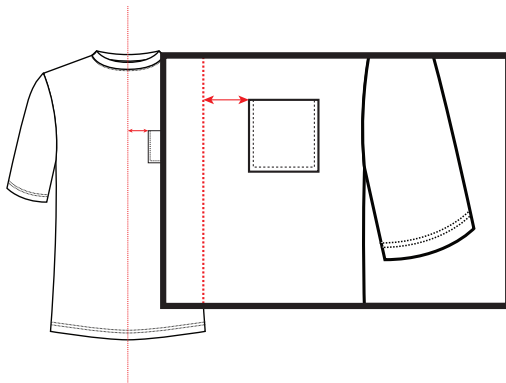
10. Back Pocket Placement from Yoke (closest corner to Outseam)- Measure back pocket from edge of yoke straight down to edge of pocket



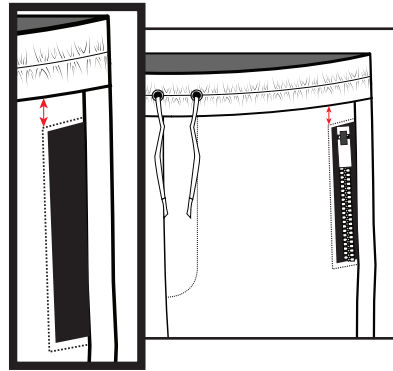
11. Back Pocket Placement from CB (closest top corner of pocket) - Measure back pocket from center back straight across to edge at top of pocket



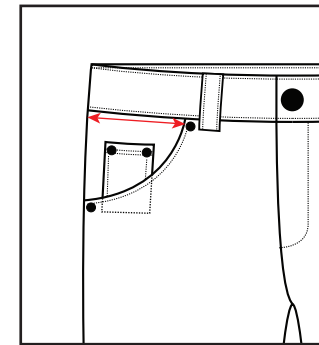
12. Pocket Placement from HPS- Measure pocket from HPS straight down to edge of pocket



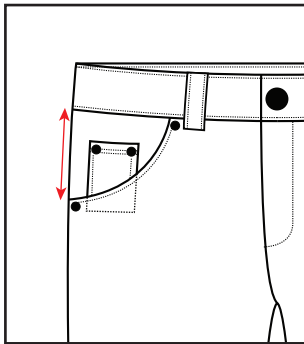
13. Pocket Placement from Center Front- Measure center front of garment from edge of pocket straight across to center front



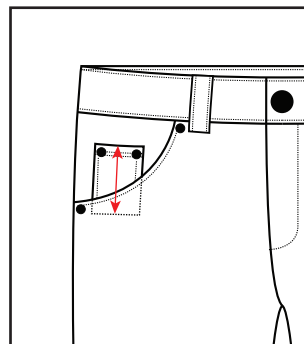
14. Pocket Placement from Waistband- Measure from joining seam of waistband straight down to seam of pocket



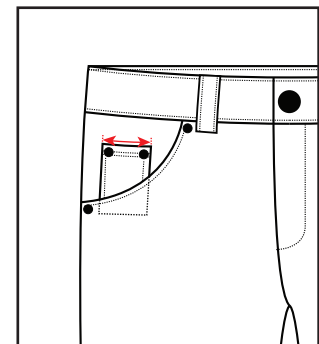
15. Front Pocket Opening from Outseam (along Waistseam)- Measure front of garment from outseam to edge of pocket parallel to waistseam



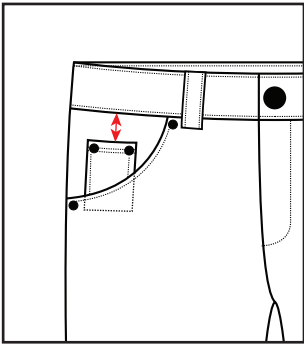
16. Front Pocket Opening from Waistseam (along Outseam)- Measure front of garment from waistband to edge of pocket parallel to outseam



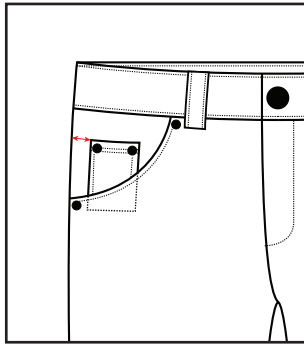
17. Coin Pocket Depth at Center- Measure from center top edge of pocket straight down to bottom edge of pocket



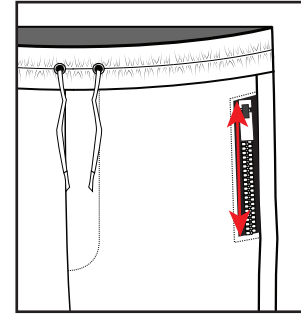
18. Coin Pocket Width at Top- Measure at top of pocket from edge to edge



19. Coin Pocket Placement from Waistband
(closest corner to Center Front)-Measure from joining seam of waistband straight down to edge of pocket perpendicular to waistseam



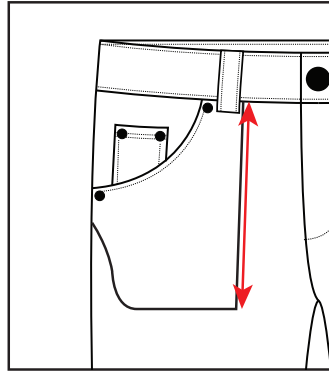
20. Coin Pocket Placement from Outseam (at top corner)- Measure from outseam to edge of pocket parallel to waistseam



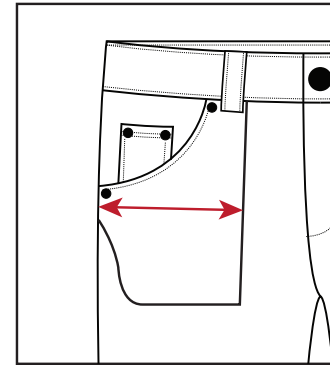
21. Welt Pocket Height-
Measure from top edge of pocket straight down to bottom edge



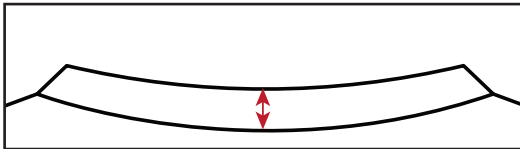
22. Welt Pocket Opening Width-
Measure straight across from edge to edge parallel to pocket opening



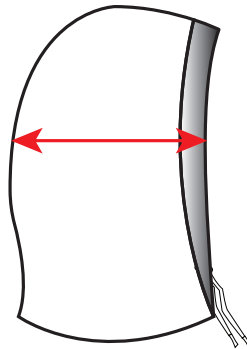
23. Pocket Bag Depth-
Measure from waistseam straight down to bottom edge of pocket bag



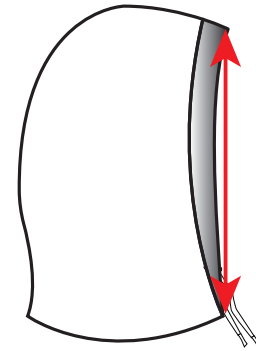
24. Pocket Bag Width-
Measure width from seam to seam



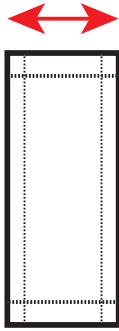
25. Neck Trim Height at Center Back-
Measure hood at CB from joining seam to edge



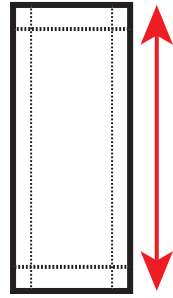
26. Hood at Widest Point-
Measure hood straight across from edge to edge at widest point



27. Hood Opening Height-
Measure hood straight down from edge to edge



28. Belt Loop Width-
Measure hood straight across from
edge to edge



29. Belt Loop Height-
Measure hood straight down from
edge to edge